

UniversityCity Prosperity Project

Pre-Proposal Meeting

September 16, 2014



Agenda

- Introduction
- Project Background
- Overview of Design Criteria
- Overview of Contract Requirements
- Technical Proposal Requirements
- Final Selection Process

UNIVERSITY CITY PROSPERITY PROJECT

2013 TIGER DISCRETIONARY GRANT AWARD - \$ 11,397,120 awarded federal TIGER funds requiring a local match of \$ 3,108,543 and including an additional \$ 1,000,000 in Transportation Alternatives Program funds and over \$ 100 million on other community improvements.

The UniversityCity Prosperity Project implements a transformative complex of pedestrian-oriented, multimodal and intermodal improvements. By linking the City of Sweetwater and Florida International University to major hubs and providing a healthy and educational enriched urban built environment, UniversityCity will support long term prosperity in a just, balanced and sustainable community. By improving the built, natural and electronic environment, UniversityCity announces its intent to evolve into a prosperous 22nd Century community.

Pedestrian-oriented improvements, including a signature shared-use bridge, mixed-use development, community transit, intermodal stations, feeder bus services and transit stops, will integrate Sweetwater and FIU segments of the UniversityCity community. More frequent transit use, efficient intermodal transfers and safer pedestrian-oriented transit access will further enhance the multimodal urban environment via an advanced and comprehensive electronic system of wayfinding, informed, Transfer Program and Applications (ITPA). An initial phase of ITPA will deliver a comprehensive awareness of transit services, traffic and parking availability to the UniversityCity community. This big data and community-centric electronic guidance system leverages Terahy peospatial database technology, parking crowdsourcing technology, ALTA super-resolution aerial photography, and IBM Smart Cities.

As an innovative approach to higher education and community connectivity, UniversityCity is a first-of-its-kind effort that serves as a model for other sustainable community development projects throughout the nation.



» Reinventing Multimodal Transportation
» Adapting to a Warming Climate and Global Economic Competition
» Growing a Prosperous Community for the 22nd Century

ITPA-ARCHITECTURE ITPA-CARMA ITPA-TECHNOLOGY SUMMARY ITPA-TERRA

PRINCIPALS
FIU FLORIDA INTERNATIONAL UNIVERSITY
NSF CAKE

PARTNERS
TIGER U.S. Department of Transportation
IBDX INSTITUTE FOR INNOVATIVE TRANSPORTATION

SIGNIFICANT VENDORS & VALUABLE PARTICIPANTS
TYLI
IBM
Proxus Software Consulting
Miami-Dade County
SFWMD

Introduction

- FIU Leadership
- FIU Facilities Team
- Sweetwater Team
- Major Stakeholders

UNIVERSITY CITY PROSPERITY PROJECT

2013 TIGER DISCRETIONARY GRANT AWARD - \$ 11,397,120 awarded federal TIGER funds requiring a local match of \$ 3,108,543 and including an additional \$ 1,000,000 in Transportation Alternatives Program funds and over \$ 100 million on other community improvements.

The UniversityCity Prosperity Project implements a transformative complex of pedestrian-oriented, multimodal and intermodal improvements. By linking the City of Sweetwater and Florida International University to major hubs and providing a healthy and educational enriched urban built environment, UniversityCity will support long term prosperity in a just, balanced and sustainable community. By improving the built, natural and electronic environment, UniversityCity announces its intent to evolve into a prosperous 22nd Century community.

Pedestrian-oriented improvements, including a signature shared-use bridge, mixed-use development, community transit, intermodal stations, feeder bus services and transit stops, will integrate Sweetwater and FIU segments of the UniversityCity community. More frequent transit use, efficient intermodal transfers and safer pedestrian-oriented transit access will further enhance the multimodal urban environment via an advanced and comprehensive electronic system of wayfinding, informed, Transfer Program and Applications (ITPA). An initial phase of ITPA will deliver a comprehensive awareness of transit services, traffic and parking availability to the UniversityCity community. This big data and community-centric electronic guidance system leverages Terahy peospatial database technology, parking crowdsourcing technology, ALTA super-resolution aerial photography, and IBM Smart Cities.

As an innovative approach to higher education and community connectivity, UniversityCity is a first-of-its-kind effort that serves as a model for other sustainable community development projects throughout the nation.



- » Reinventing Multimodal Transportation
- » Adapting to a Warming Climate and Global Economic Competition
- » Growing a Prosperous Community for the 22nd Century

ITPA ARCHITECTURE **ITPA CANALS** **ITPA TECHNOLOGY SUMMARY** **ITPA TERRAINS**

PRINCIPALS
FIU FLORIDA INTERNATIONAL UNIVERSITY
NSF CAKE

PARTNERS
TIGER U.S. Department of Transportation
FDX ASSOCIATION FOR ECONOMIC DEVELOPMENT

SIGNIFICANT VENDORS & VALUABLE PARTICIPANTS
TYLI
IBM
Prospect Software Consulting
Miami-Dade County
SFWMD

Project Background

- TIGER Grant History
- Overall Project Description
 - Urban Design and Infrastructure
 - Pedestrian-Oriented Transit Access Infrastructure Improvements
 - Community Transit
 - Community Transit Service Development Enhancements
 - ITPA
 - Informed Traveler Program and Applications
- Owner's Intent

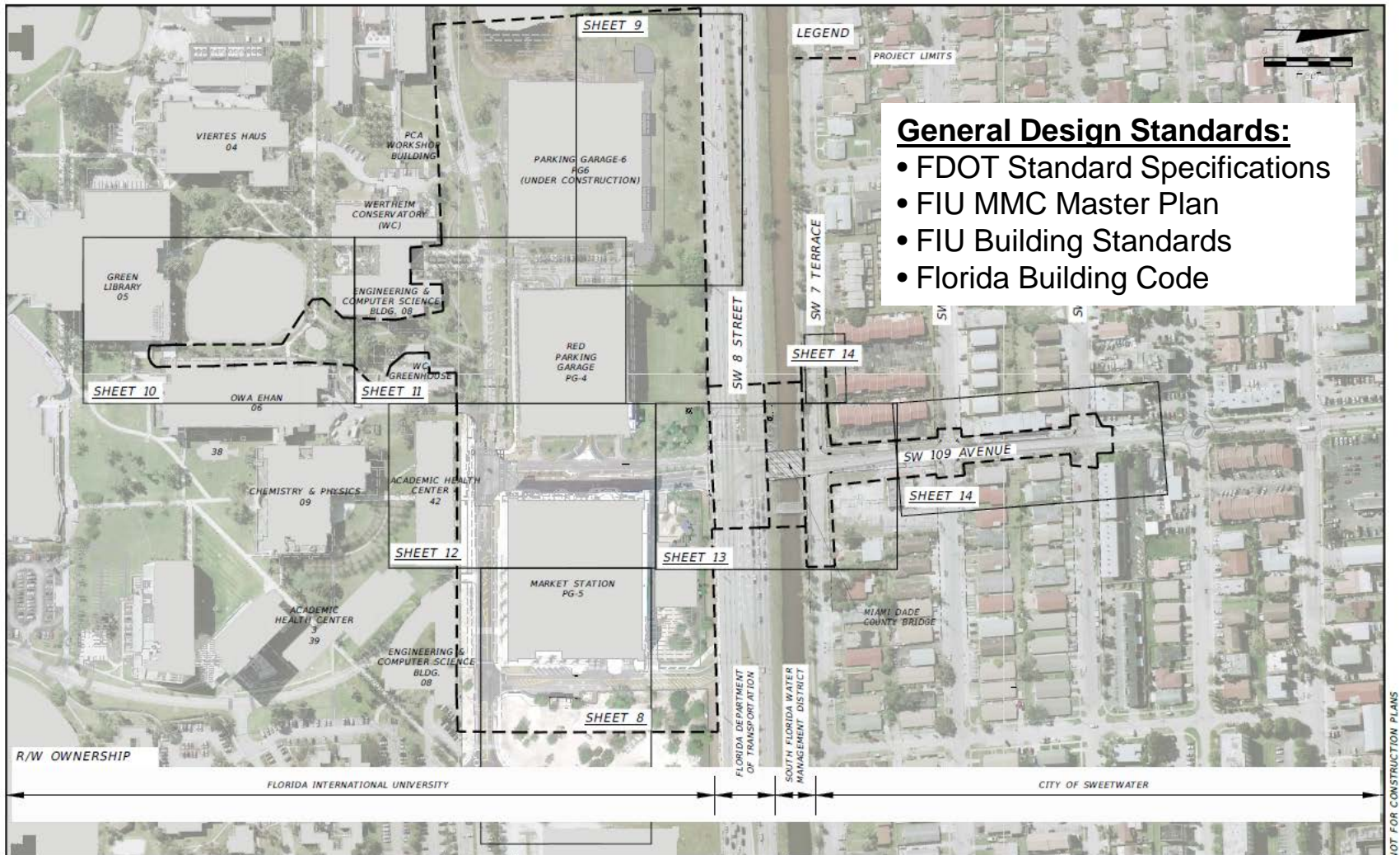
Project Background

- Design-Build Project Components – Urban Design and Infrastructure
 - “Signature” Pedestrian-Oriented Shared-Use Bridge
 - Pedestrian Plazas at Bridge Landings
 - An Urban “Memorial Plaza” in Sweetwater
 - Pedestrian Oriented Streetscape and Complete Street Enhancements along 109th Ave.
 - Pedestrian Oriented Improvements to FIU Campus
 - Advanced Intermodal and Multimodal Station (AIMS)
- Owner’s Intent

Design Criteria

General Design Standards:

- FDOT Standard Specifications
- FIU MMC Master Plan
- FIU Building Standards
- Florida Building Code



REVISIONS	
DATE	DESCRIPTION
05.20.2014	DRAFT



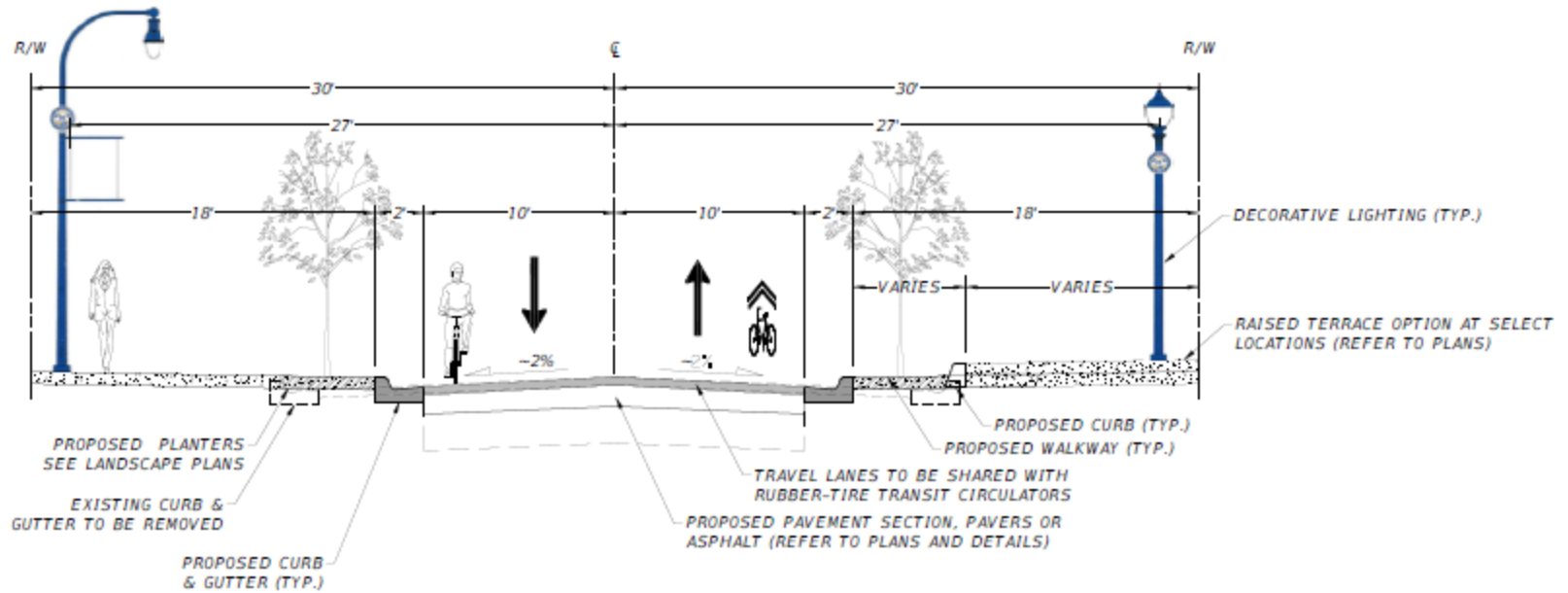
T-Y-LIN INTERNATIONAL
 201 ALHAMBRA CIRCLE SUITE 900
 Coral Gables, Florida. 33134
 Phone: 305 / 567-1888 Fax: 305 / 567-1771

FLORIDA INTERNATIONAL UNIVERSITY
 CITY OF SWEETWATER UNIVERSITY CITY
 CONCEPTUAL PLANS FOR COMPLETE STREETS,
 PEDESTRIAN ORIENTED SHARED-USE BRIDGE, AND
 ADVANCED TRANSIT MULTIMODAL STATION

KEY SHEET	SHEET NO. 2
-----------	----------------

NOT FOR CONSTRUCTION PLANS

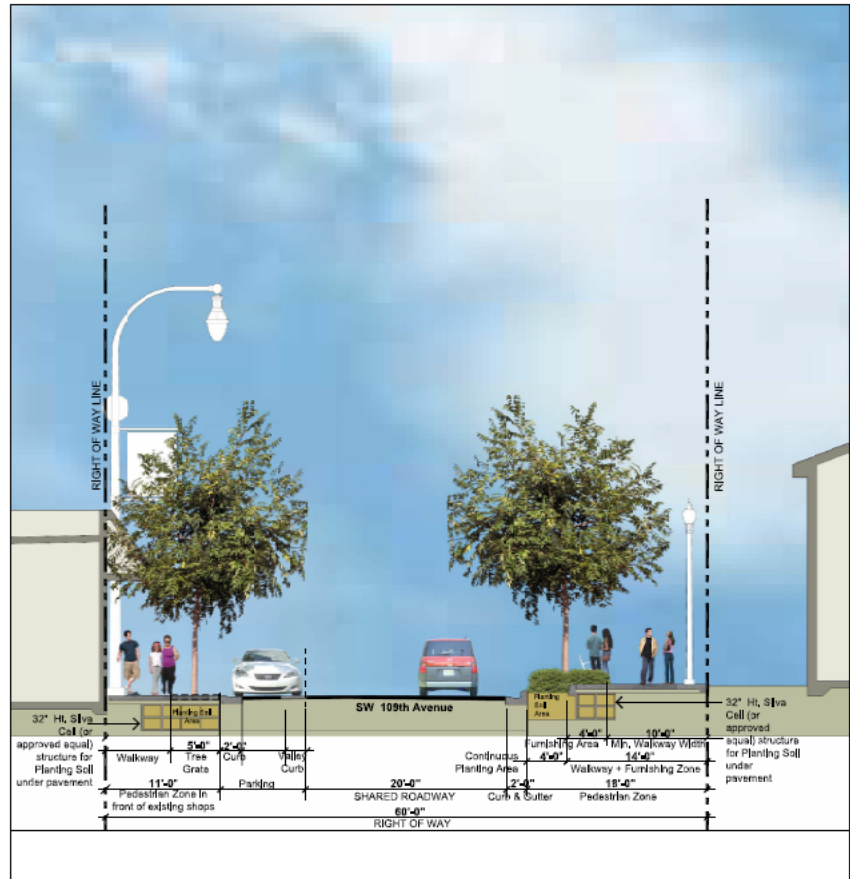
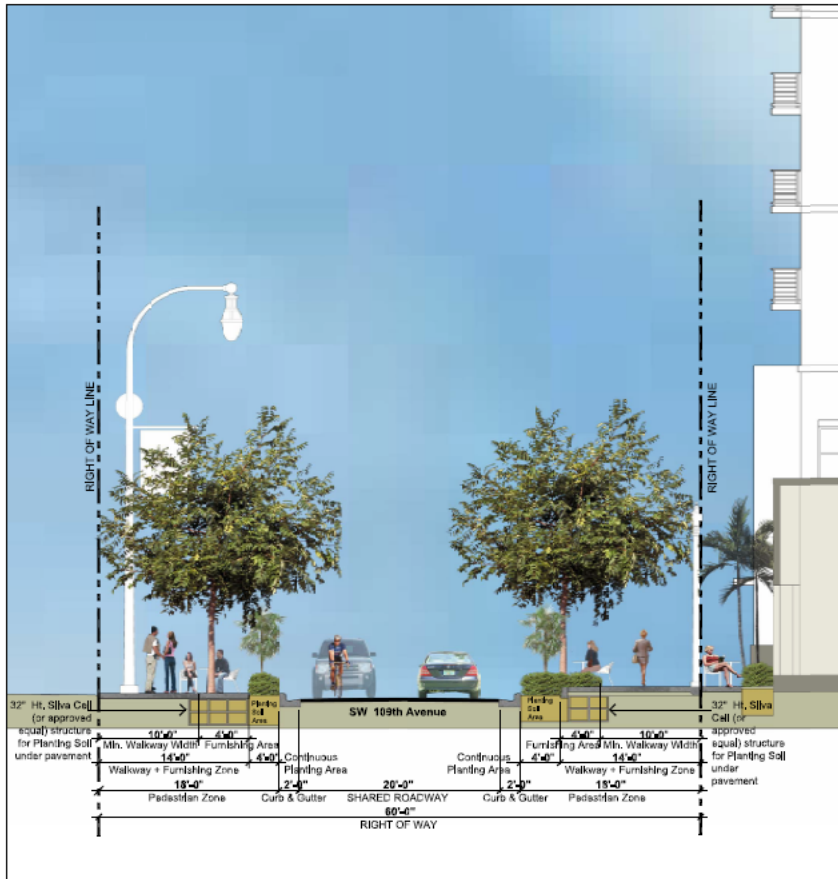
Design Criteria: Sweetwater Complete Streets



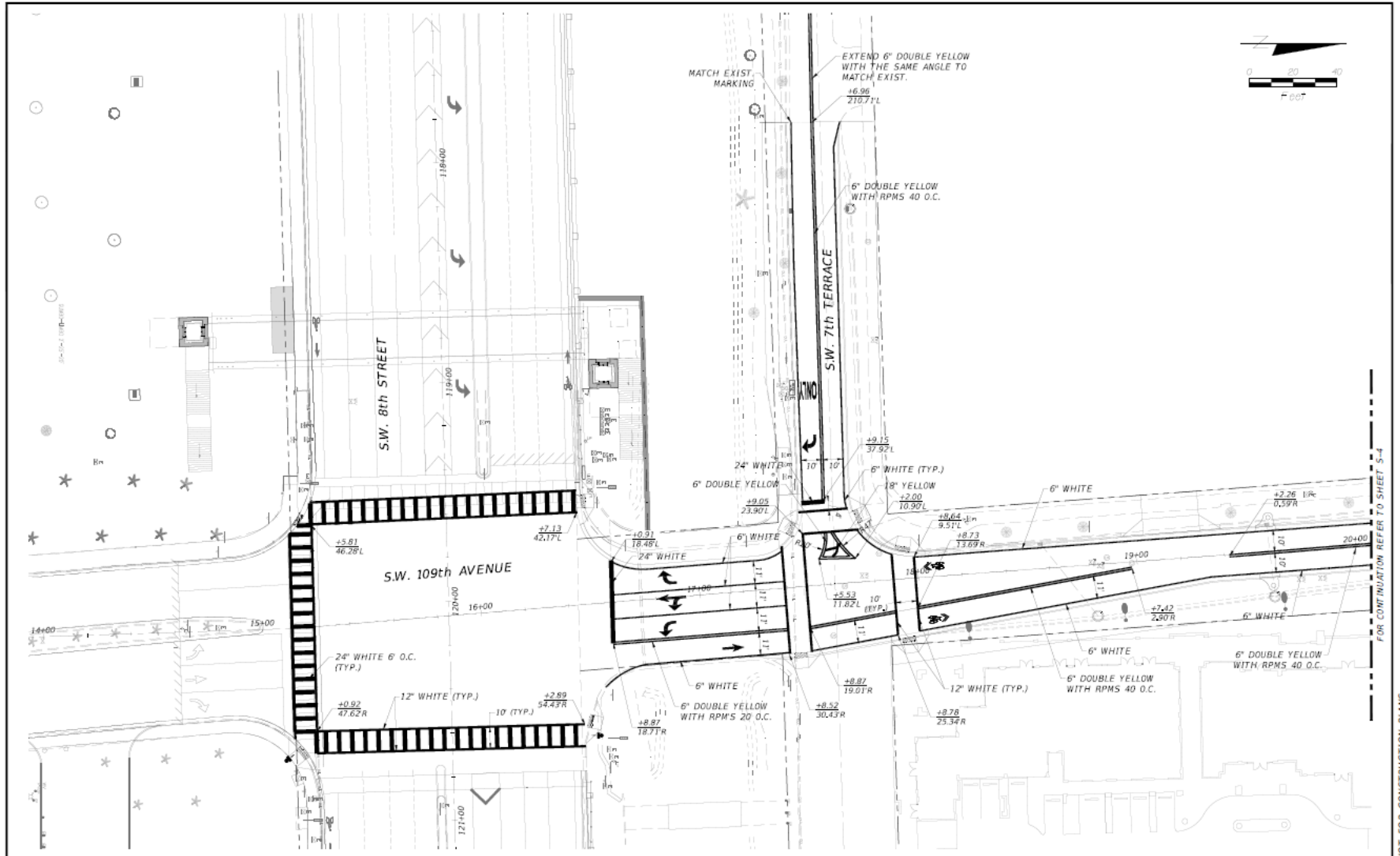
SW 109TH AVE FROM 7TH TERR TO 6TH ST
TYPICAL SECTION FOR COMPLETE STREET WITHIN CITY OF SWEETWATER

NTS

Design Criteria: Sweetwater Complete Streets



Design Criteria: Sweetwater Complete Streets



FOR CONTINUATION REFER TO SHEET S-4

NOT FOR CONSTRUCTION PLANS

REVISIONS	
DATE	DESCRIPTION
05-20-2014	DRAFT



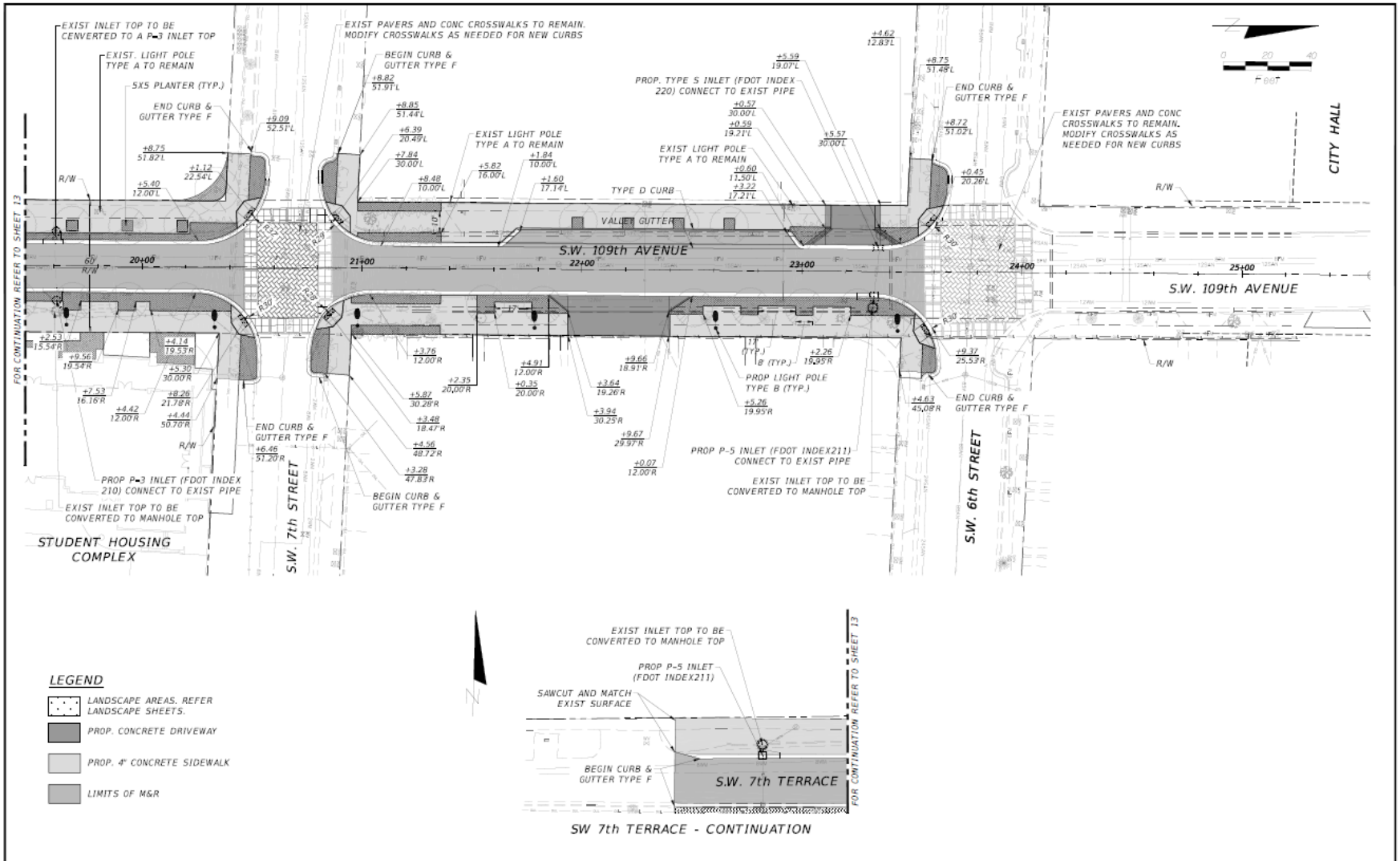
T-Y-LIN INTERNATIONAL
 201 ALHAMBRA CIRCLE SUITE 900
 Coral Gables, Florida. 33134
 Phone: 305 / 567-1888 Fax: 305 / 567-1771

FLORIDA INTERNATIONAL UNIVERSITY
 CITY OF SWEETWATER UNIVERSITY CITY
 CONCEPTUAL PLANS FOR COMPLETE STREETS,
 PEDESTRIAN ORIENTED SHARED-USE BRIDGE, AND
 ADVANCED TRANSIT MULTIMODAL STATION

**SIGNING & PAVEMENT
 MARKING PLANS**

SHEET NO.
S-3

Design Criteria: Sweetwater Complete Streets



REVISIONS	
DATE	DESCRIPTION
05.20.2014	DRAFT



T-Y-LIN INTERNATIONAL
 201 ALHAMBRA CIRCLE SUITE 900
 Coral Gables, Florida. 33134
 Phone: 305 / 567-1888 Fax: 305/567-1771

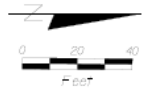
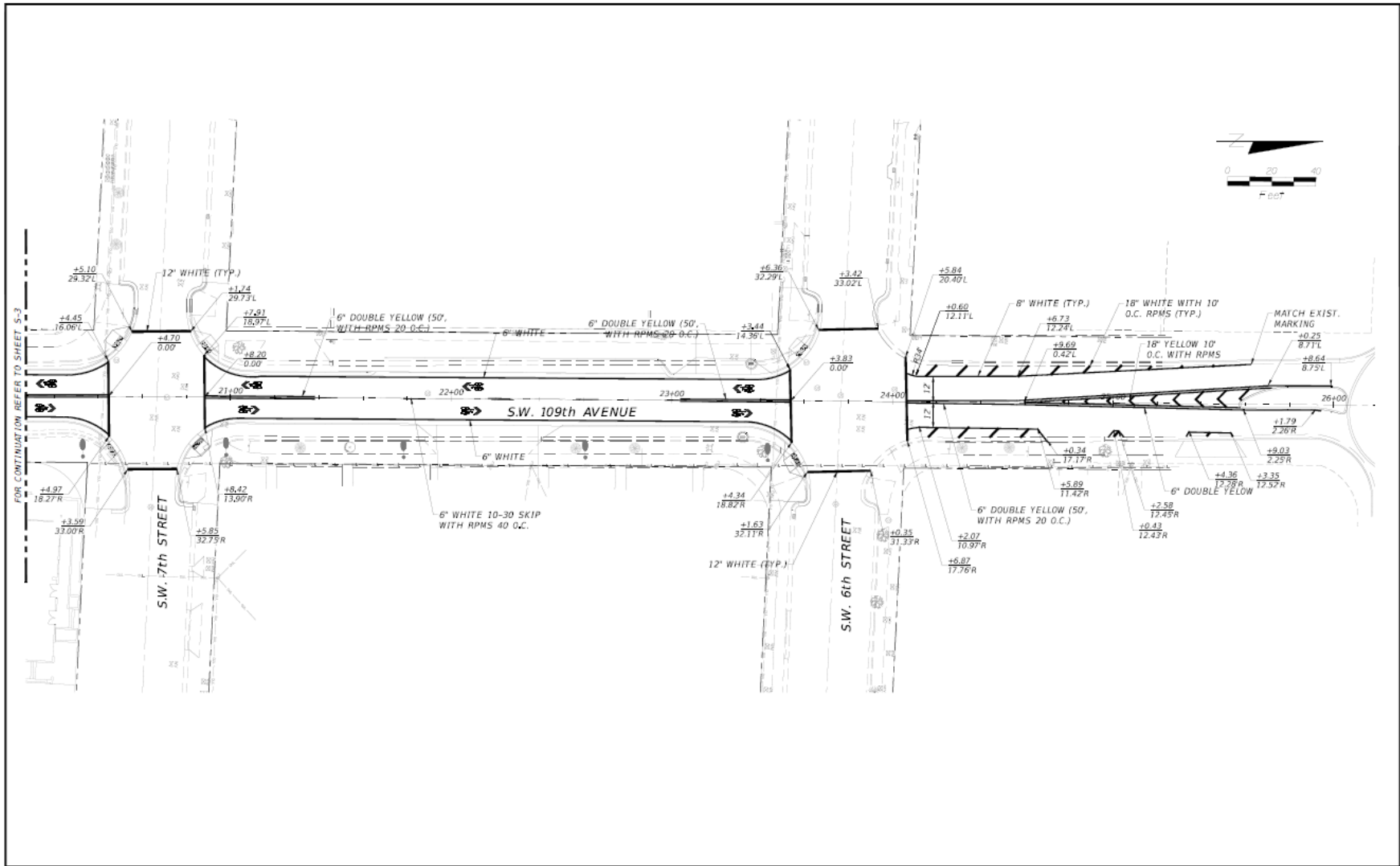
FLORIDA INTERNATIONAL UNIVERSITY
 CITY OF SWEETWATER UNIVERSITY CITY
 CONCEPTUAL PLANS FOR COMPLETE STREETS,
 PEDESTRIAN ORIENTED SHARED-USE BRIDGE, AND
 ADVANCED TRANSIT MULTIMODAL STATION

COMPLETE STREET SWEETWATER SECTION

SHEET NO.
14

NOT FOR CONSTRUCTION PLANS

Design Criteria: Sweetwater Complete Streets



REVISIONS	
DATE	DESCRIPTION
05.20.2014	DRAFT



T-Y-LIN INTERNATIONAL
 201 ALHAMBRA CIRCLE SUITE 900
 Coral Gables, Florida. 33134
 Phone: 305 / 567-1888 Fax: 305/567-1771

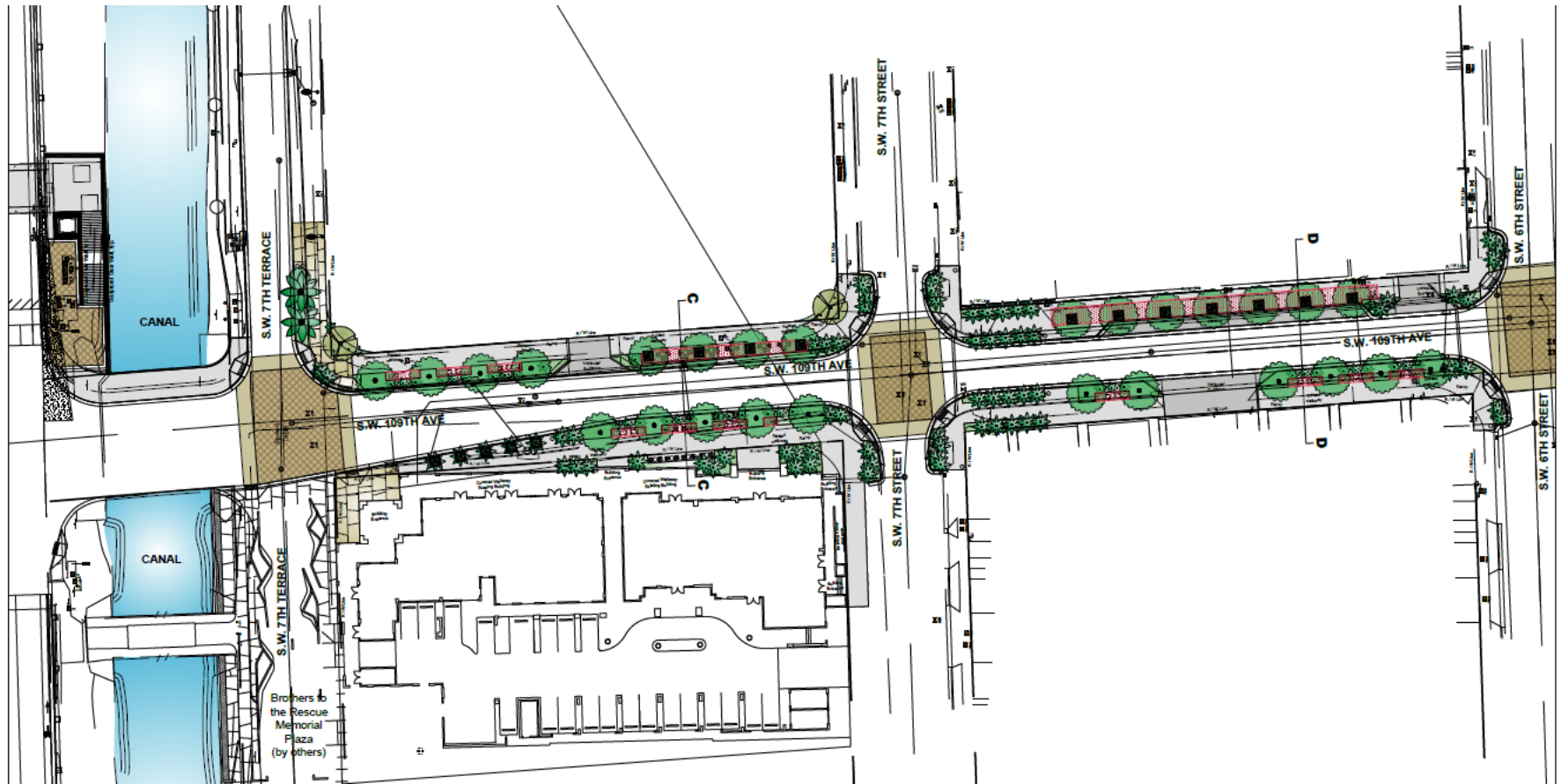
FLORIDA INTERNATIONAL UNIVERSITY
 CITY OF SWEETWATER UNIVERSITY CITY
 CONCEPTUAL PLANS FOR COMPLETE STREETS,
 PEDESTRIAN ORIENTED SHARED-USE BRIDGE, AND
 ADVANCED TRANSIT MULTIMODAL STATION

**SIGNING & PAVEMENT
 MARKING PLANS**

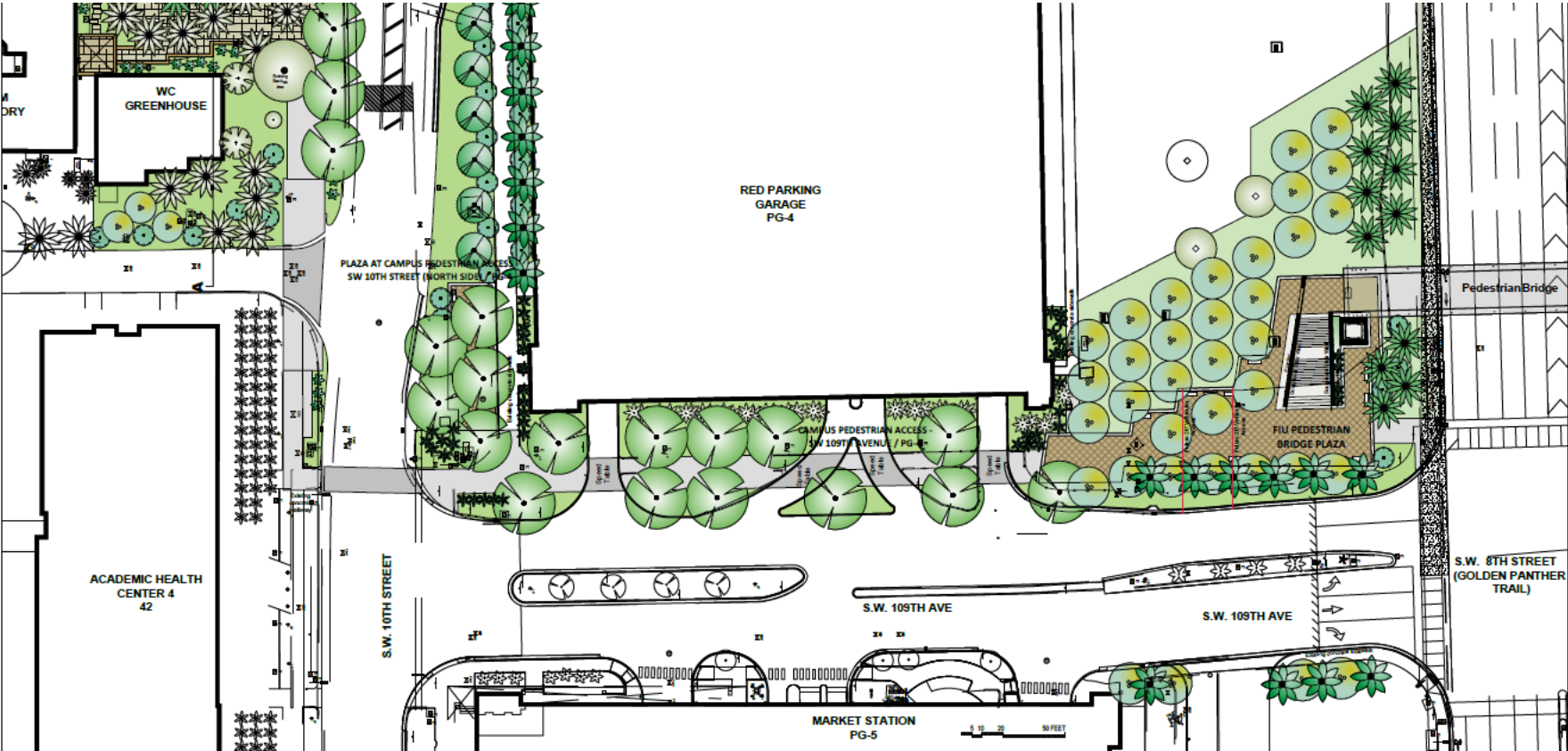
SHEET NO.
S-4

NOT FOR CONSTRUCTION PLANS

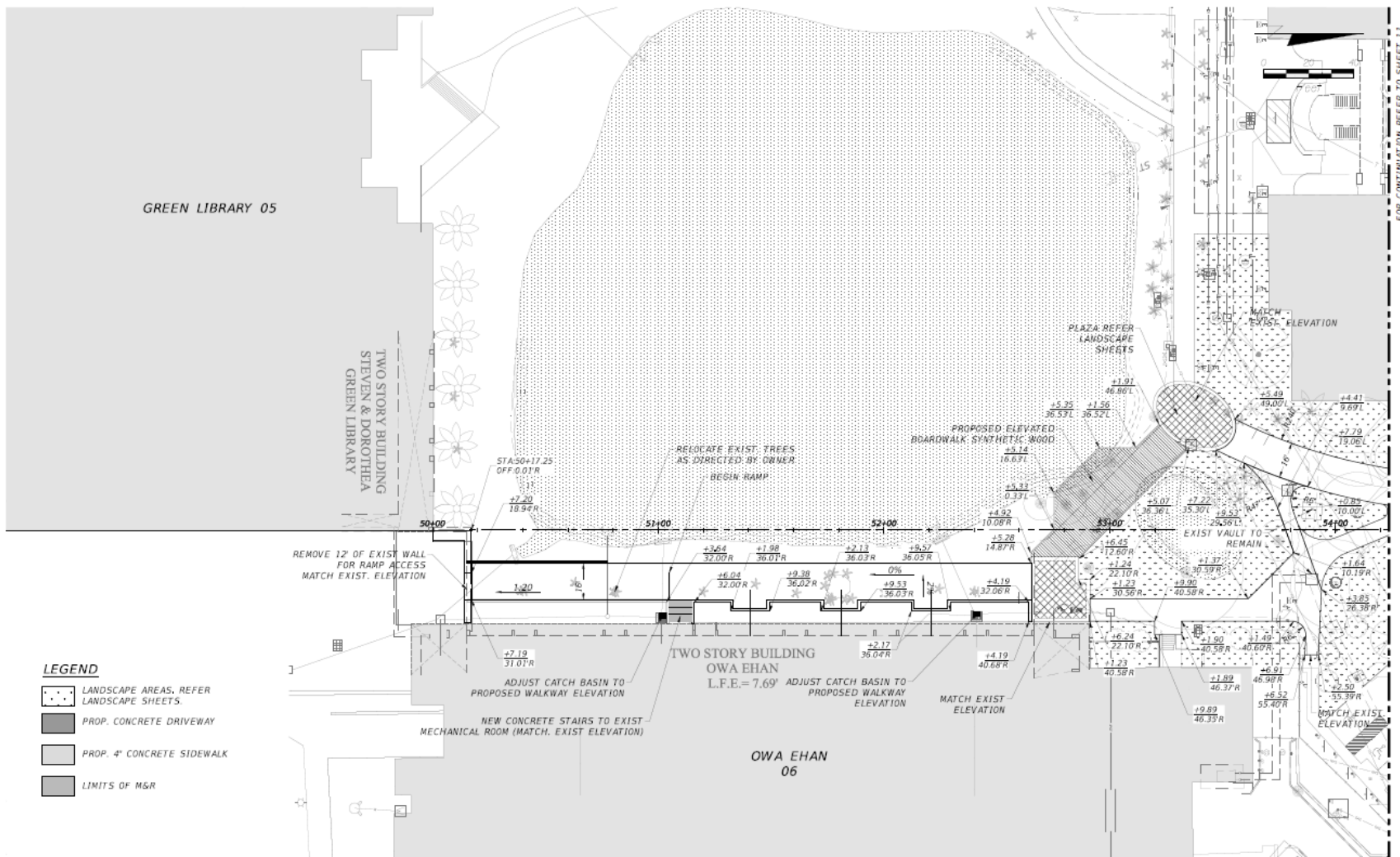
Design Criteria: Sweetwater Complete Streets



Design Criteria: FIU Complete Streets (Base Bid)



Design Criteria: FIU Complete Streets (Alt. 1)



FOR CONTINUATION REFER TO SHEET 11

NOT FOR CONSTRUCTION PLANS

REVISIONS	
DATE	DESCRIPTION
05.20.2014	DRAFT



T-Y-LIN INTERNATIONAL
 201 ALHAMBRA CIRCLE SUITE 900
 Coral Gables, Florida. 33134
 Phone: 305 / 567-1888 Fax: 305 / 567-1771

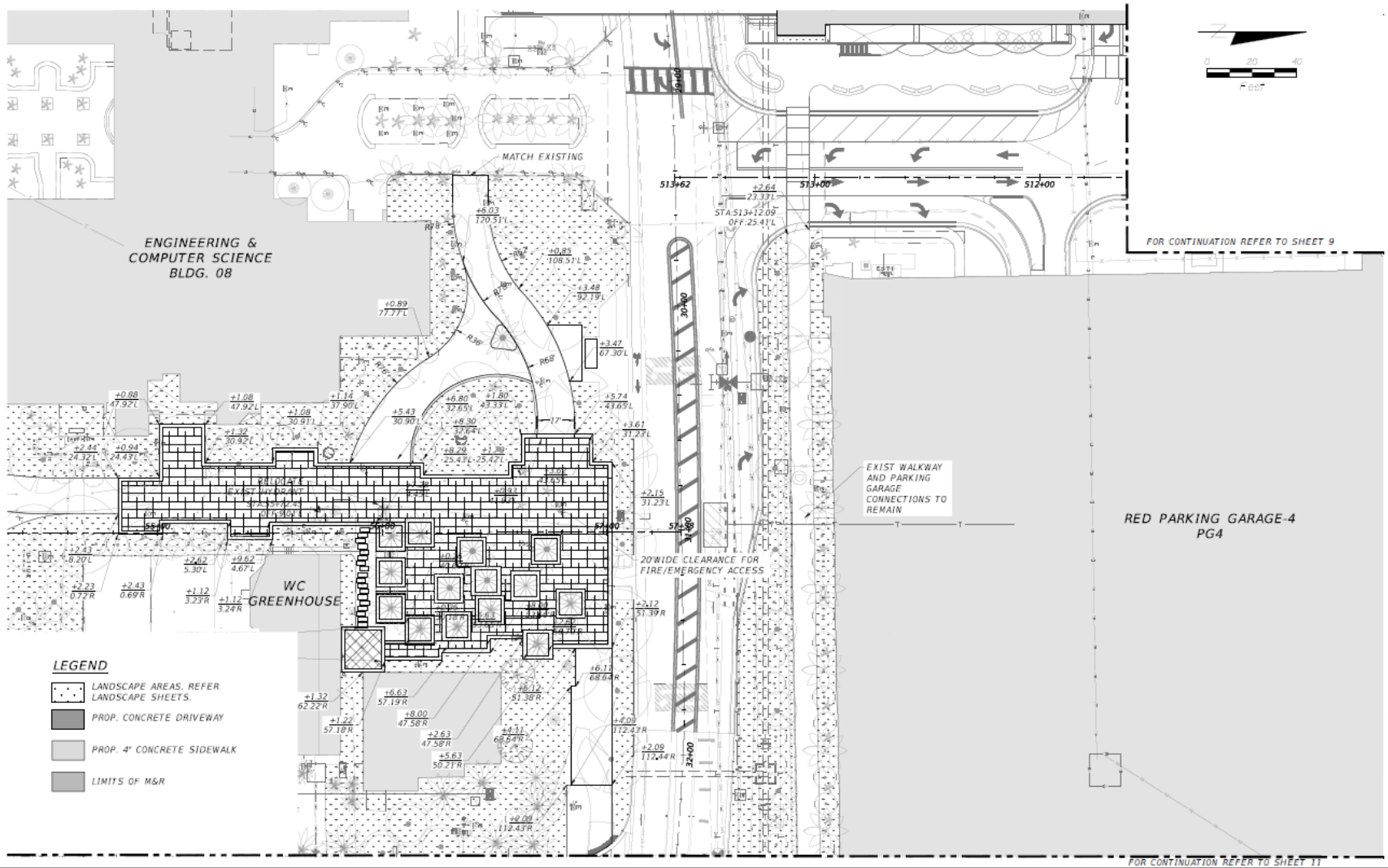
FLORIDA INTERNATIONAL UNIVERSITY
 CITY OF SWEETWATER UNIVERSITY CITY
 CONCEPTUAL PLANS FOR COMPLETE STREETS,
 PEDESTRIAN ORIENTED SHARED-USE BRIDGE, AND
 ADVANCED TRANSIT MULTIMODAL STATION

UNIVERSITY CITY IMPROVEMENTS
 ALTERNATIVE 1

SHEET NO.
10

Filename: C:\Projects\2014\05_FIU_Street\City_02.dwg; Plot Date: 5/20/2014

Design Criteria: FIU Complete Streets (Alt. 1)



FOR CONTINUATION REFER TO SHEET 9

EXIST WALKWAY AND PARKING GARAGE CONNECTIONS TO REMAIN

RED PARKING GARAGE-4 PG4

20' WIDE CLEARANCE FOR FIRE/EMERGENCY ACCESS

FOR CONTINUATION REFER TO SHEET 11

- LEGEND**
- LANDSCAPE AREAS. REFER LANDSCAPE SHEETS.
 - PROP. CONCRETE DRIVEWAY
 - PROP. 4" CONCRETE SIDEWALK
 - LIMITS OF M&R

REVISIONS	
DATE	DESCRIPTION
05.20.2014	DRAFT

FIU FLORIDA INTERNATIONAL UNIVERSITY

T-Y-LIN INTERNATIONAL
 201 ALHAMBRA CIRCLE SUITE 900
 Coral Gables, Florida. 33134
 Phone: 305 / 567-1888 Fax: 305 / 567-1771

FLORIDA INTERNATIONAL UNIVERSITY
 CITY OF SWEETWATER UNIVERSITY CITY

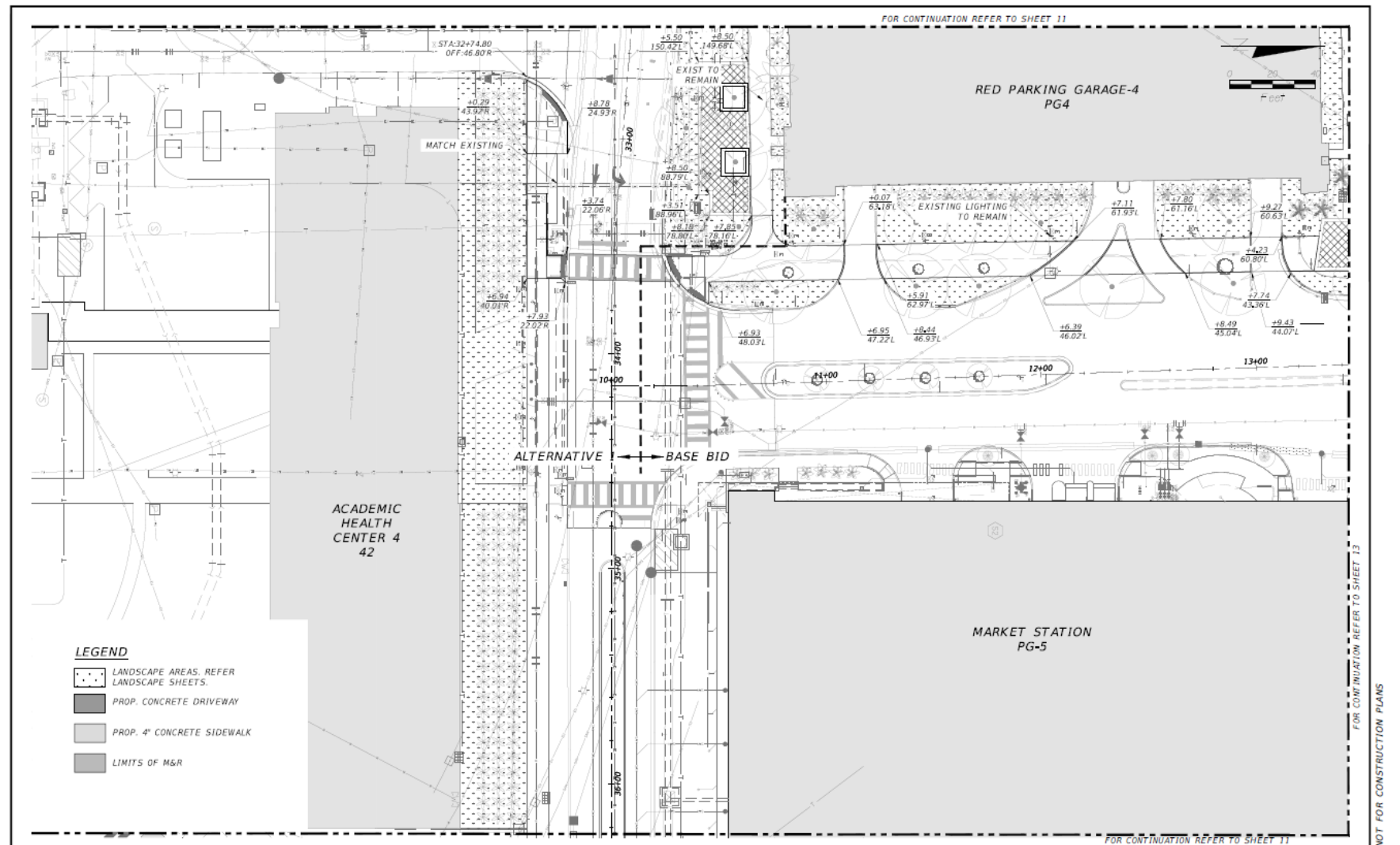
CONCEPTUAL PLANS FOR COMPLETE STREETS,
 PEDESTRIAN ORIENTED SHARED-USE BRIDGE, AND
 ADVANCED TRANSIT MULTIMODAL STATION

**UNIVERSITY CITY IMPROVEMENTS
 ALTERNATIVE 1**

SHEET NO.
11

NOT FOR CONSTRUCTION PLANS

Design Criteria: FIU Complete Streets (Alt. 1)



REVISIONS	
DATE	DESCRIPTION
03.20.2014	DRAFT



T-Y-L INTERNATIONAL
 201 ALHAMBRA CIRCLE SUITE 900
 Coral Gables, Florida. 33134
 Phone: 305 / 567-1888 Fax: 305 / 567-1771

FLORIDA INTERNATIONAL UNIVERSITY
 CITY OF SWEETWATER UNIVERSITY CITY
 CONCEPTUAL PLANS FOR COMPLETE STREETS,
 PEDESTRIAN ORIENTED SHARED-USE BRIDGE, AND
 ADVANCED TRANSIT MULTIMODAL STATION

UNIVERSITY CITY IMPROVEMENTS

SHEET NO.
12

Design Criteria: FIU Complete Streets (Alt. 1)



SECTION A-A - ACROSS THE CONSERVATORY PLAZA - FLORIDA INTERNATIONAL UNIVERSITY / SCALE 1"=10'-0"



SECTION B-B - ACROSS THE LAKE
FLORIDA INTERNATIONAL UNIVERSITY / SCALE 1"=10'-0"

REVISIONS	
DATE	DESCRIPTION
03.06.2014	DRAFT



FERNANDEZ-BERAUD INC.
Landscape Architecture and Planning
LDB000033

2330 N.W. 27th Avenue #116
Miami, Florida 33134
PH: 784-914-6138
Fax: 784-914-6177

L & B Professional Services
Registered Landscape Architect
0000000

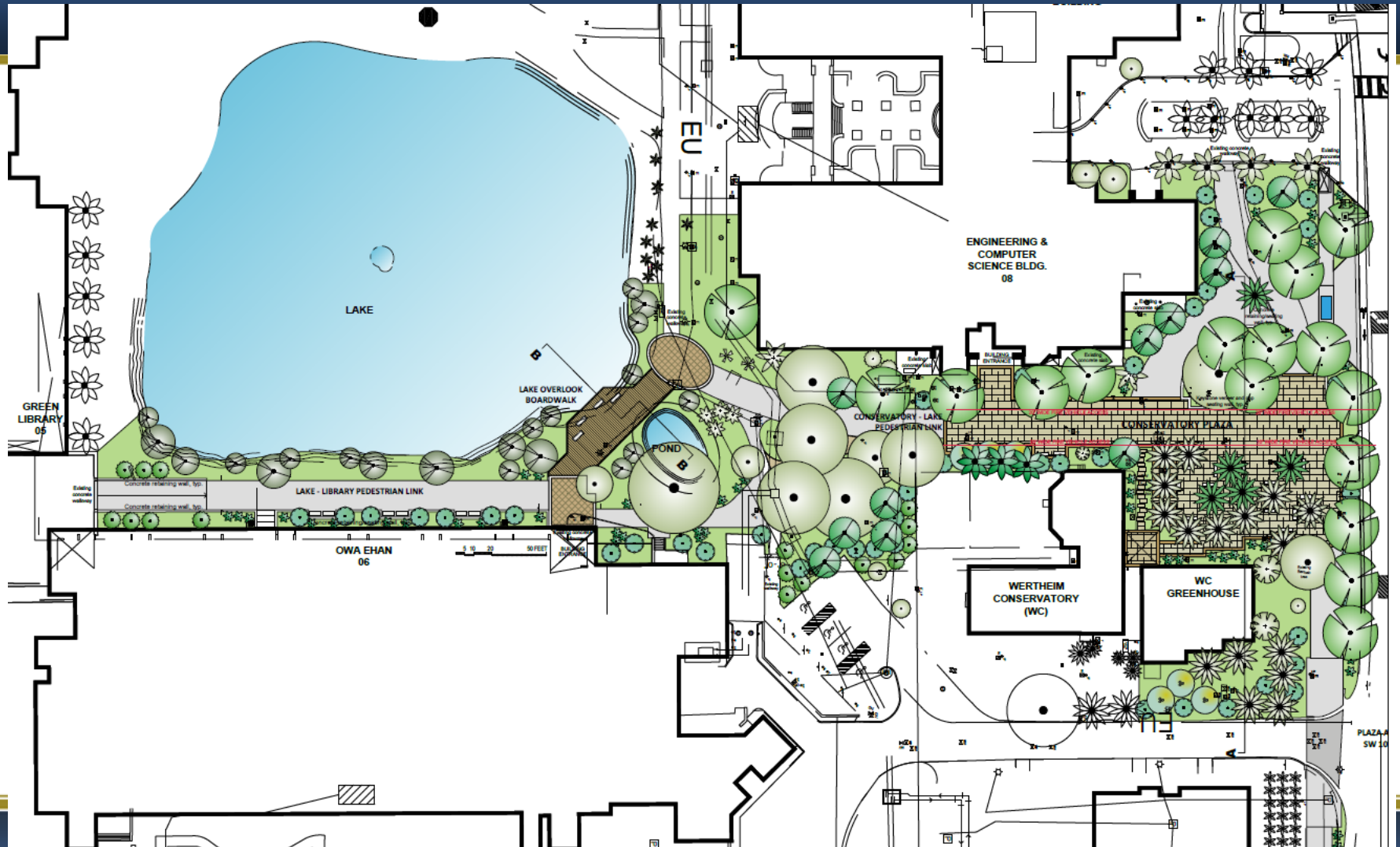
FLORIDA INTERNATIONAL UNIVERSITY
CITY OF SWEETWATER UNIVERSITY
CONCEPTUAL PLANS FOR COMPLETE STREETS, PEDESTRIAN
ORIENTED SHARED-USE BRIDGE, AND ADVANCED TRANSIT
MULTIMODAL STATION

UNIVERSITY CITY IMPROVEMENTS
FLORIDA INTERNATIONAL UNIVERSITY
CONCEPTUAL CROSS SECTIONS
05-20-2014

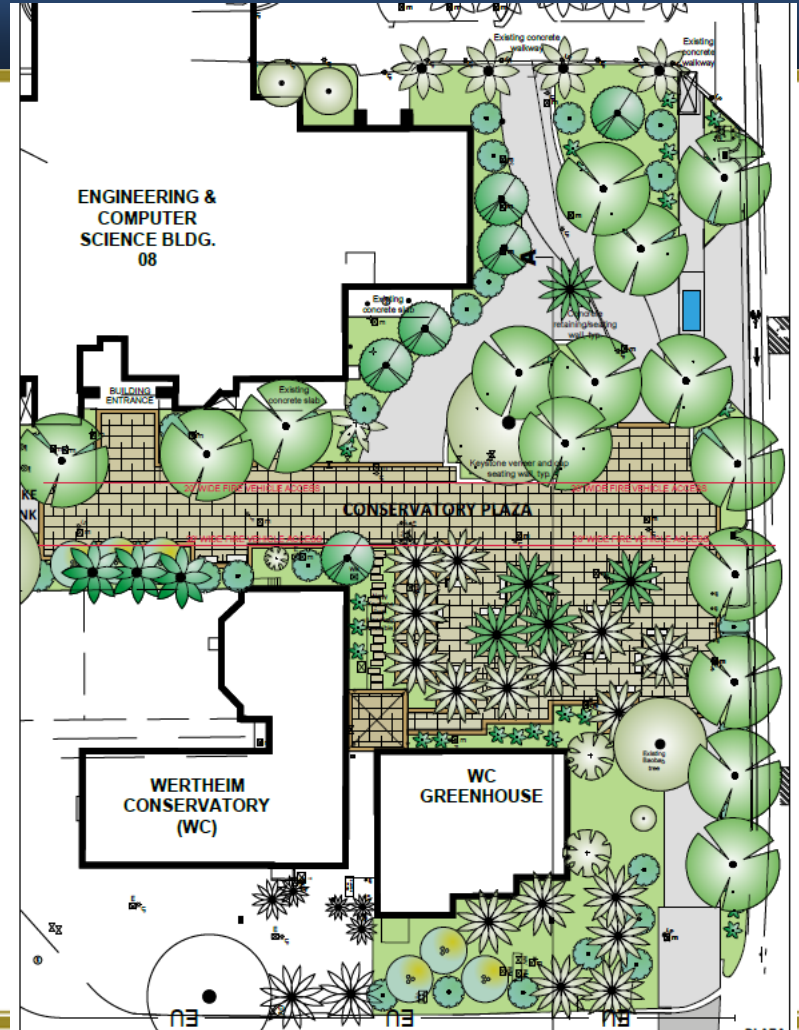
SHEET
NO.
LH-10

NOT FOR CONSTRUCTION PLANS

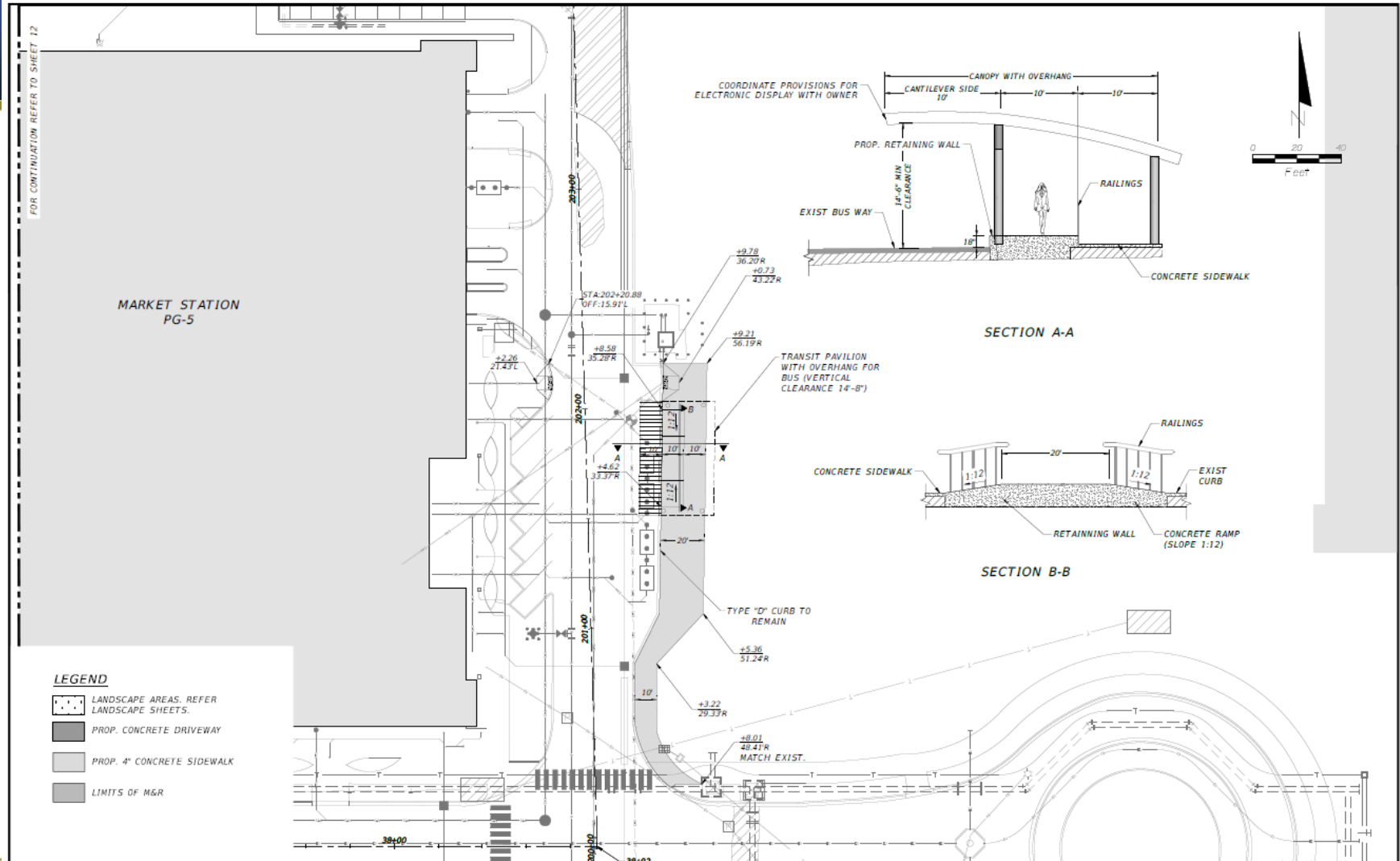
Design Criteria: FIU Complete Streets (Alt. 1)



Design Criteria: FIU Complete Streets (Alt. 1)



Design Criteria: AIMS Platform (Base Bid)



NOT FOR CONSTRUCTION PLANS



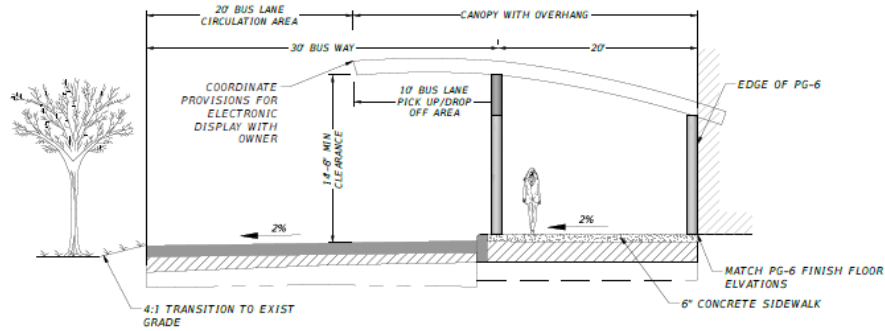
T·Y·LIN INTERNATIONAL
 201 ALHAMBRA CIRCLE SUITE 900
 Coral Gables, Florida. 33134
 Phone: 305 / 567-1888 Fax: 305 / 567-1771

FLORIDA INTERNATIONAL UNIVERSITY
 CITY OF SWEETWATER UNIVERSITY CITY
 CONCEPTUAL PLANS FOR COMPLETE STREETS,
 PEDESTRIAN ORIENTED SHARED-USE BRIDGE, AND
 ADVANCED TRANSIT MULTIMODAL STATION

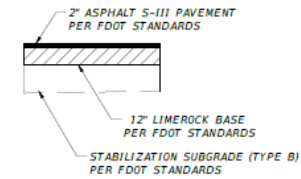
ADVANCED INTERMODAL STATION (AIMS) PLATFORM

SHEET NO.
8

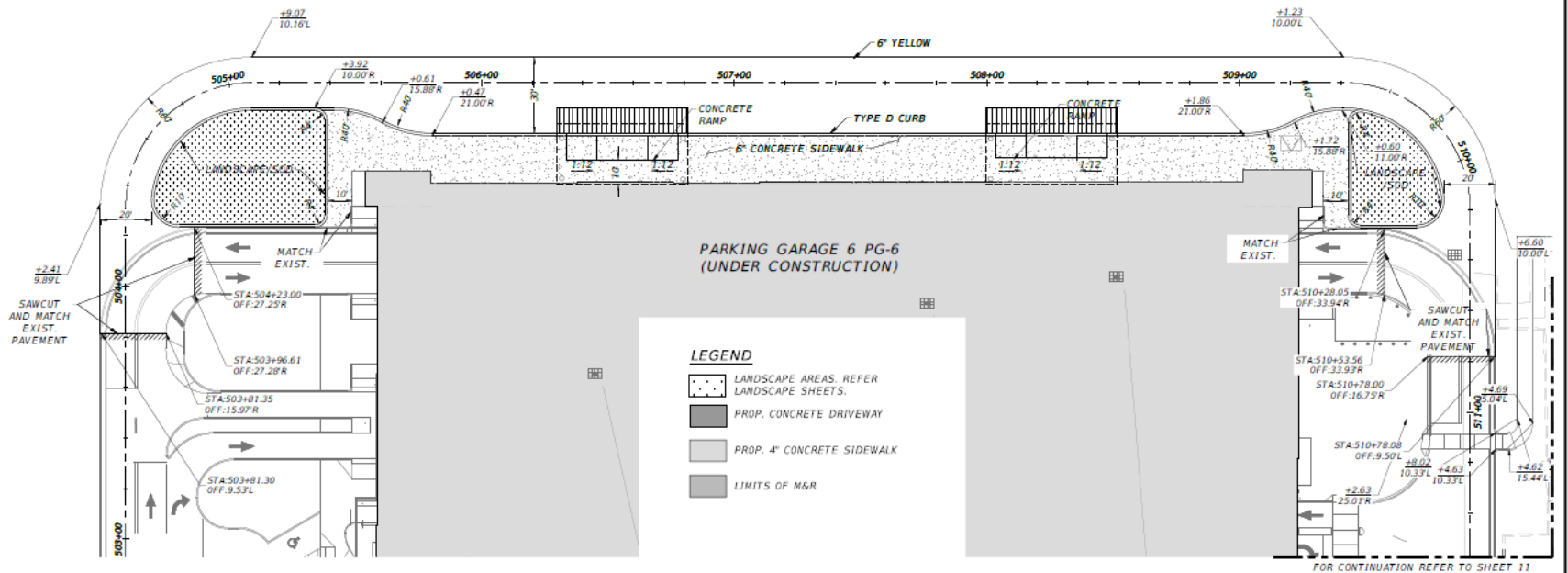
Design Criteria: AIMS Platform (Alt. 2)



BUS WAY TYPICAL SECTION



BUS WAY PAVEMENT SECTION DETAIL



- LEGEND**
- LANDSCAPE AREAS. REFER LANDSCAPE SHEETS.
 - PROP. CONCRETE DRIVEWAY
 - PROP. 4" CONCRETE SIDEWALK
 - LIMITS OF M&R

REVISIONS	DATE	DESCRIPTION
	03.20.2014	DRAFT



T-Y-LIN INTERNATIONAL
 201 ALHAMBRA CIRCLE SUITE 900
 Coral Gables, Florida. 33134
 Phone: 305 / 567-1888 Fax: 305 / 567-1771

FLORIDA INTERNATIONAL UNIVERSITY
 CITY OF SWEETWATER UNIVERSITY CITY
 CONCEPTUAL PLANS FOR COMPLETE STREETS,
 PEDESTRIAN ORIENTED SHARED-USE BRIDGE, AND
 ADVANCED TRANSIT MULTIMODAL STATION

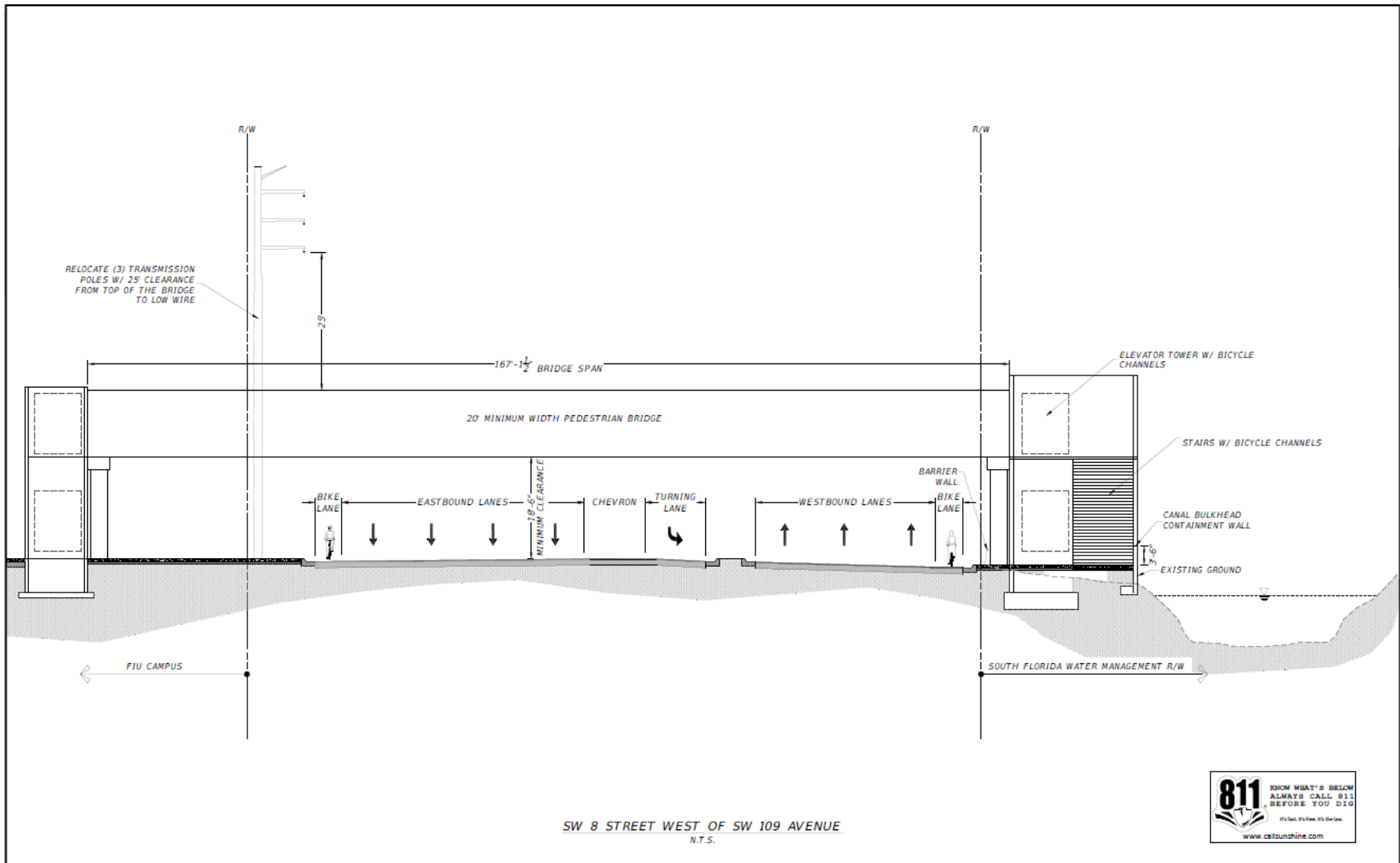
ADVANCED INTERMODAL STATION (AIMS) PLATFORM ALTERNATIVE 2

SHEET NO.	9
-----------	---

NOT FOR CONSTRUCTION PLANS

Filename: F:\Projects\180221-01_FIU University City DP\180221-01_Plans 1_Plan Date: 03.20.2014

Design Criteria: Pedestrian Bridge



SW 8 STREET WEST OF SW 109 AVENUE
N.T.S.



REVISIONS	
DATE	DESCRIPTION
05-20-2014	DRAFT



T-Y-LIN INTERNATIONAL
201 ALHAMBRA CIRCLE SUITE 900
Coral Gables, Florida. 33134
Phone: 305 / 567-1888 Fax: 305 / 567-1771

**FLORIDA INTERNATIONAL UNIVERSITY
CITY OF SWEETWATER UNIVERSITY CITY**
CONCEPTUAL PLANS FOR COMPLETE STREETS,
PEDESTRIAN ORIENTED SHARED-USE BRIDGE, AND
ADVANCED TRANSIT MULTIMODAL STATION

TYPICAL SECTION

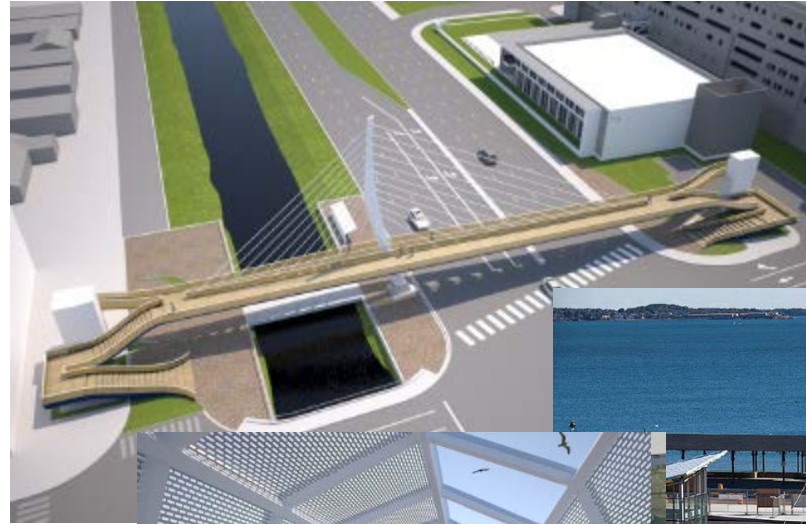
SHEET NO.
17

NOT FOR CONSTRUCTION PLANS

Design Criteria: Pedestrian Bridge

Key Components

- Bridge Dimensions
- Major Features
- Elevators/Vestibules
- Bike-Tire Channels
- Missile protection
- MEP requirements



Contract Requirements

Design Builder's Responsibilities

- DBE – 8.6% Goal, Not a Requirement
- Geotechnical Services
- Permitting
 - Overview of Coordination to Date
 - NEPA Commitments
- Survey
 - Verification of Existing Conditions
- Submittals
- Contract Duration
- Project Schedule
- Public Involvement
- Quality Management Plan
- Adjoining Construction Projects

Technical Proposal Requirements

- General Format
- Submittal Requirements – Sections 1 to 7
- Bid Price Proposal

Final Selection Process

- Evaluation Criteria
- Final Selection Process
 - Selection Formula:

Total Best Value Points, maximum 106 = (Low Base Bid Price/Bidders Base Bid Price) X 40 Points (amount allocated to Price Category) + (Total earned Technical Evaluation Score, maximum 60 Points) + (Additive Alternative Bonus Points, maximum 6 points)

See Example:

	Technical Score	Alternative Bonus	Bid Price Proposal	Bid Price Points	Total Best Value Points
Bidder 1	55	4	\$ 9,300,000.00	39.78	98.78
Bidder 2	50	4	\$ 9,388,000.00	39.41	93.41
Bidder 3	45	6	\$ 9,250,000.00	40.00	91.00

- Stipends - \$28,164.00